

### EDGE SERIES



## Unified Bandwidth Management Systems

With today's networks becoming increasingly complex; speed, responsiveness, and visibility are fast becoming an urgent requirement for IT administrators. The growth of wide-area networks (WANs) which connect local users to the Internet and remote users to the corporate backbone, are becoming a significant part of the network infrastructure.

The main difficulty is ensuring that business-critical applications such as VoIP (Voice over the Internet), CRM (Customer Relationship Management) and ERP (Enterprise Resource Planning), remain highly responsive and that remote applications like Citrix, Oracle, and Terminal services remain highly available over virtual private networks (VPNs).

### EdgeXL Eliminates

- × Sluggish applications and loss of productivity
- × Unauthorized usage of unapproved applications and network resources
- × Lack of visibility into the network and problem origination
- × The high costs associated with acquiring additional WAN connectivity

### Total Link Control

The EdgeXL appliances are designed to provide an easy to use single point of management for all bandwidth functions at the network's edge.

This includes the ability to shape applications, provide network high availability, and optimize remote connectivity to central sites.

### Application Performance Management

Ensures that critical applications get the priority required to deliver fast responsiveness to end-users with detailed network reporting.

### Diverse Link Routing

Delivers 99.999% uptime for network resources and provides an inexpensive upgrade path for additional network bandwidth when needed.

### Site2Site Optimization

Ensure high availability, enhanced QoS and improved responsiveness for remote sites by utilizing VPN aggregation technology developed by XRoads Networks.

### What Is UBM?

Unified Bandwidth Management or UBM is a concept first used by XRoads Networks to describe the combination of network management tools into a single managed platform.

*The advantages of such a design include:*

### Ease Of Management

XRoads Networks delivers a central bandwidth management appliance that IT administrators can easily use to identify, analyze, and resolve network resource issues.

### Increased Productivity

XRoads Networks ensures continuous productivity through application acceleration and reliability guarantees unlike any other appliance on the market today.

### Improved Quality of Service

XRoads Networks delivers a feature set designed to prioritize, optimize, and accelerate applications while at the same time ensuring 99.999% uptime for both local and remote users.

**AUTOFLOW LAYER**  
Shaping based on real-time traffic metering and dynamic reallocation of bandwidth resources based on administrative policies

**XRoads Networks AutoFlow Technology**

**APPLICATION LAYER**  
Signature Shaping

**Full Layer-7 Inspection w/Auto Classification**

**SESSION LAYER**  
Port Shaping

**TRANSPORT LAYER**  
TCP/UDP/ICMP Shaping

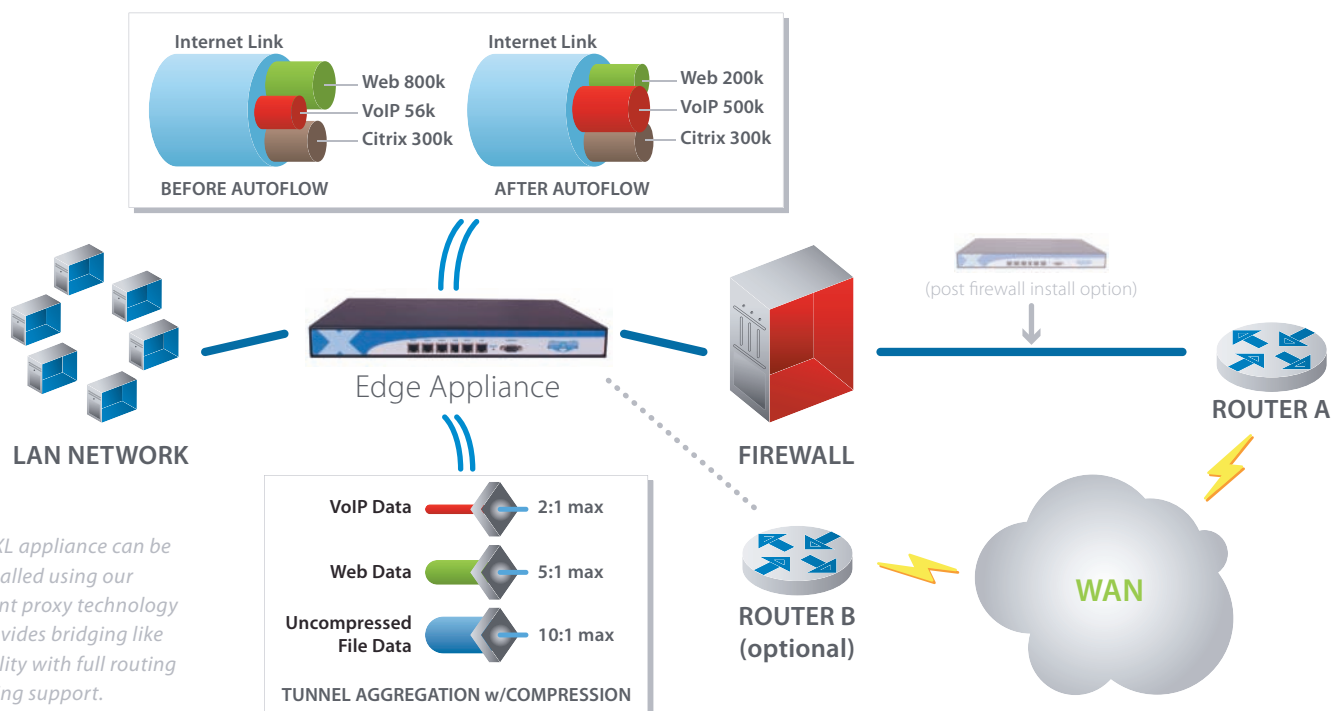
**NETWORK LAYER**  
IP Address Shaping

**Standard Packet Inspection Devices**

**LINK LAYER**  
MAC Address Shaping

**PHYSICAL LAYER**  
10/100/1000 Ethernet

## EDGE SERIES



The EdgeXL appliance can be easily installed using our transparent proxy technology which provides bridging like functionality with full routing and shaping support.

## Features

### AutoFlow Traffic Shaping

- × Dynamic Bandwidth Assignment
- × IP Address, MAC, Port, Protocol
- × Application Definition
- × Source / Destination Direction

### L7 QoS Classification

- × Hundreds of Pre-Defined Applications
- × Instant Traffic Identification
- × VoIP Classification
- × Citrix Classification

### Network Load Balancing

- × Best Path Routing
- × ActiveDNS w/Session Persistence
- × Automated Failover / Recovery
- × Policy Based Application Routing

### Site2Site VPN Optimization

- × SSL-Based 3DES Encryption
- × Data Compression
- × VPN Tunnel Aggregation
- × Automated Tunnel Failover

### Network Visibility

- × Top User/Apps Report
- × IP Host User/App Report
- × WAN Usage Report / SLA Report
- × Web Content Usage Reporting

### Enterprise Class Firewall

- × L7 Stateful Packet Inspection
- × IPSec / H232 / SIP Pass-Through
- × URL Content Filtering / Virus Protection
- × Session Limiting / DDoS

### Routing Capabilities

- × Static Routing (Layer 3)
- × Transparent Proxy (Layer 2)
- × NAT / PAT / VirtualNAT
- × 802.1Q VLAN Tagging

### Management & Reporting

- × Web GUI HTTP / HTTPS (no Java)
- × Console / CLI via SSH
- × WAN / Application Usage Reporting
- × SNMP / Email Alerting

## Specifications

		EdgeXL-10 Series	EdgeXL-20 Series	EdgeXL-50 Series	EdgeXL-80 Series
<b>Capacity</b>	Max Performance	100Mbps	250Mbps	450Mbps	1Gbps
	Monitored Sessions	100,000	200,000	500,000	1,000,000
	IP Host Management	25	250	5,000	10,000
	IP Flow Management	50,000	250,000	500,000	1,000,000
<b>Features</b>	AutoFlow Shaping	S	S	S	S
	L7 QoS Classification	S	S	S	S
	WAN Load Balancing	X	X	X	X
	WAN Auto-Failover	X	X	X	X
	Site2Site Optimization	V	V	V	V
	VPN Binding/Failover	V	V	V	V
	Enterprise Firewall	included	included	included	included
Network Visibility	included	included	included	included	
<b>Hardware</b>	Memory	256	512	1048	2048
	Interfaces (WAN/DMZ)	Up to 4	Up to 4	Up to 8	Up to 10
	Dimensions	8.47" x 11.24" x 1.91"	16.87" x 14.87" x 1.73"	16.87" x 14.87" x 1.73"	17.44" x 20.1" x 3.46"
	Power	Full Range	Full Range	Full Range	Dual Full Range

Each appliance is FCC/UL/CE certified and includes a 2-year limited hardware warranty. ICSA Compliant Stateful Inspection Firewall

© 2007 XRoads Networks, Inc. the XRoads Networks logo, and other designated trademarks, trade names, logos, and brands are the property of XRoads Networks, Inc. or their respective owners. Product specifications are subject to change without notice. This material is provided for informational purposes only; XRoads Networks assumes no liability related to its use and expressly disclaims any implied warranties of merchantability or fitness for any particular purpose.