

- Monitors and alerts on device availability, bandwidth utilization and overall network health

- Robust diagnostic tools for troubleshooting and quickly resolving complex issues

- Network discovery and inventory tools

- Simplifies NetFlow analysis and Cisco Configuration management

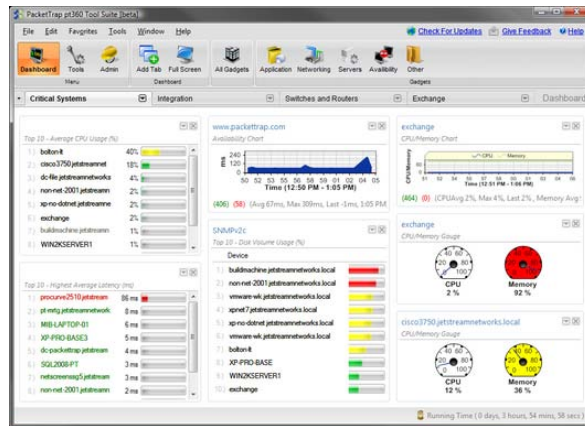
- Supports SNMP, WMI, and Telnet/SSH to manage small and large, complex multi-vendor networks alike

pt360 Tool Suite

PacketTrap's pt360 Tool Suite is collection of scanning, diagnostic, monitoring and other network management tools. These tools are integrated into a single, real-time dashboard that provides users with a comprehensive yet simple-to-use solution. Developed with feedback from more than 30,000 network engineers, pt360 puts charting, reporting and application gadgets at your fingertips and replaces the dozens of disparate IT tools that have littered end-user desktops for years. Unique to pt360 is its integration with browser-based open source networking tools such as Nagios and OpenNMS, its ability to pass data between tools, create custom dashboards, and save network settings and favorites. The powerful solution takes less than 10 minutes to install and allows users to control even the most complicated network.

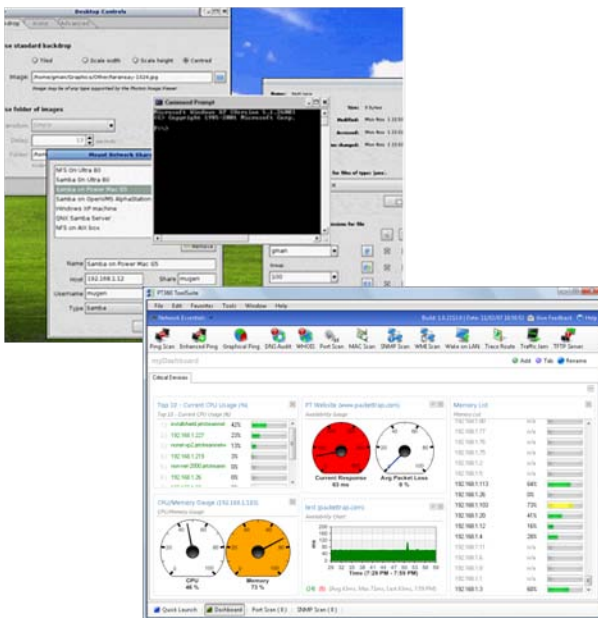
GAIN VISIBILITY INTO REAL-TIME NETWORK PERFORMANCE

At the core of the p360 Tool Suite is the dashboard, a customizable interface that gives network engineers unmatched visibility into their network.



- Companies can reduce IT budgets by as much as 30% with integrated management dashboards that link critical data from infrastructure monitoring software, application portfolio management and project management – *Forrester Research*

The dashboard also provides reassuring insight into possible hardware, software and application failures. It is perfect for organizations with 250-500 end points and makes the ultimate statement in simplicity.



Out with the Old...

- Complex command line tools...
- Isolated point tools that don't communicate with each other...
- Multiple open windows showing assorted, non-integrated tools...

In with the New...

- Integrated diagnostic and discovery tools...
- Customizable, real-time monitoring dashboard...
- Unmatched data flow between tools...

pt360 Solutions for Real Problems

Problem	Pt360 Solution with One Click
No idea what devices are on the network	Network Discovery - Performs one of the industry's fastest scans of entire network to identify and create an inventory of all network devices.
Slow network	NetFlow - Captures data into useful reports that quantify exactly how the corporate network is being utilized.
Email is down	Exchange Gadget - Monitors running services, process availability, mail queues, performance counters and host server health for MS Exchange.
Sluggish laptop	Device Details - Searches for unauthorized software and running processes that are causing CPU or memory spikes.
Time to pinpoint network problems	Integrated - Saves time by allowing all tools to interact and passes information between tools in use.
Restore connectivity for remote employees / locations within seconds	Cisco Config - Uploads 'last known good configuration' to router that is causing the issue.
Quickly shutdown traffic from an unauthorized device on the network	Switch Port Mapper - Finds and disables the interface used by the unauthorized device.

Key Tools and Features

Dashboard

A summary display of key performance indicators (KPIs) and diagnostic metrics of network performance and availability. IT departments can continuously monitor key assets.

- Drag and Drop gadgets enables custom views
- Monitors availability, CPU, memory, disk space, interface traffic, network latency and packet loss

Application Monitoring

Provides in-depth visibility of running processes and performance counters for mission-critical applications.

- Identifies application degradations early so IT Admins can prevent failures
- Provides out of box support for MS Exchange, SQL Server and Active Directory

Alerts and Notifications

Alerts notify you via email or text message when network and device performance begins to degrade or becomes unavailable.

- Enables you to fix problems before any impact on use or customer experience
- Provides detailed information about the issue in the notification message

Cisco® Configuration Tools

This robust tool eases configuration and change management of Cisco® devices in lieu of one-off non-integrated point tools.

- Downloads, modifies, compares and uploads device configuration files all from a single interface
- Auto archives configuration files for rapid recovery and comparison

Integration with PacketTrap Perspective

The pt360 Tool Suite integrates seamlessly with PacketTrap Perspective, enabling you to run any tool against a device.

- Provides troubleshooting tools at your fingertips that reduces mean time to repair
- Eliminates the need for individual diagnostic tools from multiple vendors

Switch Port Mapper

The tool identifies devices connected to each port on a switch. It provides device visibility like IP address, MAC address, VLAN, port name and availability, as well as capabilities to enable or disable an interface.

- Solves the problem of manually tracing network cables
- Exports results to CSV, XML, HTML for reporting

NetFlow Listener

This utility provides in-depth visibility into traffic network patterns and usage to determine how traffic impacts the overall health of the network.

- Identifies applications, conversations, devices, endpoints and protocols consuming bandwidth
- Supports for Cisco® NetFlow v1, 3, 5, 7 and 9, Juniper® J-Flow, and sFlow®

Network Discovery and Inventory

Leveraging SNMP, PacketTrap performs one of the industry's fastest network scans and provides a complete set of attributes for each device.

- Gathers all technical data including hardware, software and processes for each device.
- Stores inventory information locally for quick access and ability to run reports

TFTP Server

Multi-threaded and scalable; this tool supports unlimited simultaneous transfers.

- Makes updating software on network devices quick and easy
- Works seamlessly with the pt360 Cisco® Configuration Tools

Encrypted Credential Store

A single location that consolidates Windows, SNMP, SSH, and FTP credentials for quick and simple diagnostics.

- Shares credentials across tools and devices groups safely and automatically
- Utilizes 256-bit AES Encryption for ultimate security

For more information, visit:
www.PacketTrap.com/product

PacketTrap Networks
118 Second Street
6th Floor
San Francisco, CA 94105

1-866-MY-pt360
(1-866-697-8360)
Sales@PacketTrap.com

Product Comparison

	Free	PRO	Platinum
Diagnostics			
Enhanced Ping	X	X	X
Graphical Ping	X	X	X
Ping Scan	X	X	X
Trace Route	X	X	X
DNS Audit	trial	X	X
Port Scan	trial	X	X
SNMP Scan	trial	X	X
Traffic Jam	trial	X	X
Wake on LAN	trial	X	X
Switch Port Mapper	trial	trial	X
NetFlow Listener	trial	trial	X
Monitoring			
Dashboard	trial	X	X
Availability	trial	X	X
CPU Utilization	trial	X	X
Memory Utilization	trial	X	X
Disk Utilization	trial	X	X
Network Interface Utilization	trial	X	X
Open Source Integration	trial	X	X
Average Latency	trial	X	X
Average Packet Loss	trial	X	X
Syslog Server	trial	X	X
Alerts			
Warning/Critical Thresholds	trial	X	X
Cisco Configuration Tools			
TFTP Server	X	X	X
Downloader	trial	X	X
Uploader	trial	X	X
Editor/Viewer	trial	X	X
Comparison Engine	trial	X	X
Archiving	trial	X	X
Password Decryption	trial	X	X
Application Monitoring			
MS Exchange	trial	X	X
MS SQL Server	trial	X	X
MS Active Directory	trial	X	X
Discovery			
WHOIS	X	X	X
Network Discovery	trial	X	X
Network Inventory	trial	X	X
Trace Route	trial	X	X
WMI Scan	trial	X	X
MAC Scan	trial	X	X
Support			
Forum	X	X	X
Email	trial	X	X
Phone	trial	X	X