

Alarms Set To Notify Any Device Failure 24/7 - An Innovative Pinger Alerting IT Managers

autoPinger™ is part of Codima Toolbox, the fully automated and fully integrated solution managing IT networks. The ping tool automatically notifies when key network devices stop working. autoPinger™ introduces innovative Alarm sound patterns that provide an instant warning to a network manager, eliminating the need to watch a pinger console or read alarm reports .

autoPinger™ leverages the technically simple, but immensely useful pinging technique bringing sound effects and live views that simplifies network management. The audio alarms and the audio echoes speeds up failure detection and creates cost efficient troubleshooting.

From a central point, the Pinger Manager display, an engineer can check the operation of key devices on a network using ICMP pings. The Pinger Manager display provides an overview of the pinger status and statistics. The overview also gives access to long term historical statistics charts, which can easily be converted to HTML report pages.

The tool performs a simple performance analysis 24/7 to determine reliability service level, response time and service levels over short and extended time periods.

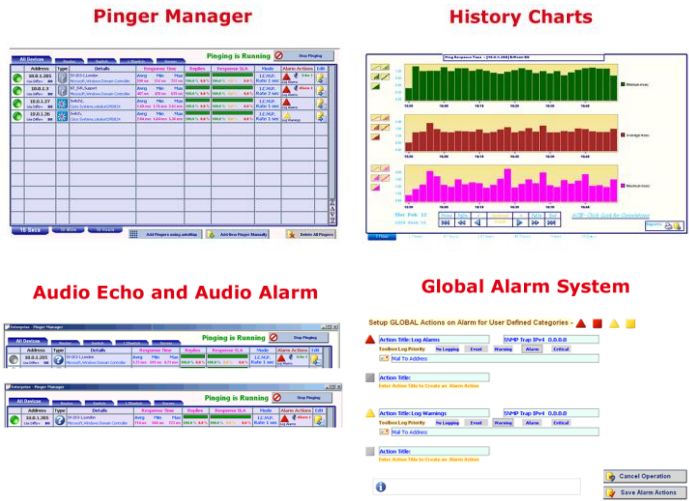
Basic QoS checks can be carried out in seconds by varying priority on ping streams, typically varying priorities to the same device to see the impact of the different packet priorities generated by autoPinger™. The tool measures Pinger Service Levels in terms of ping fail in percentage and ping response time, instantly providing this information for the last 15 seconds, last 10 minutes and last 10 hours.

The Global Alarm System provides a sophisticated failure detection system with flood control, which logs alarms and sends alarm notifications using email and SNMP Trap.

Utilizing the fully automated and fully integrated Codima Toolbox technology further brings instant value. For example, by adding the network mapping tool autoMap™, pinging results are visualized graphically live on a network map using Microsoft® Office Visio®.

Users are just seconds away from pinging all the important network nodes such as routers and servers that autoMap™ has automatically detected. Details of the ping target may be entered manually or imported from autoMap™. Users can also enter for example model name, unit type and location manually or they can be obtained automatically by autoMap™. The Pinger status is shown directly on the Visio drawing, so failure patterns and root causes (failed path components) can be seen immediately. This real time display function is automatically available to autoMonitor™ users.

Another example that takes advantage of the Codima Toolbox integration is the autoPinger™ inclusion with autoVoIP™ and autoVoIP™ Consultancy Kit, enabling users to focus the autoPinger™ facilities on the important devices in a VoIP network, such as VoIP Gateways.



Network Device Alarm

- ▶ Be notified automatically 24/7 when key network devices stop working
- ▶ Use Audio Echo - the advanced sound patterns allowing an engineer to monitor a problem device without having to keep watching a pinger console
- ▶ Use Audio Alarm - an alarm that instantly notifies on any device failure on critical components
- ▶ Check the operation of key devices on a network using ICMP Pings from a central point - the Pinger Manager
- ▶ Set any IP address as a pinger target to check out gateways for example on any VoIP network or individual interfaces
- ▶ Ping a network in seconds - integrating with autoMap™ and autoMonitor™ adds rapid pinging of all the important network nodes such as routers and servers

What Your Business Stands To Gain

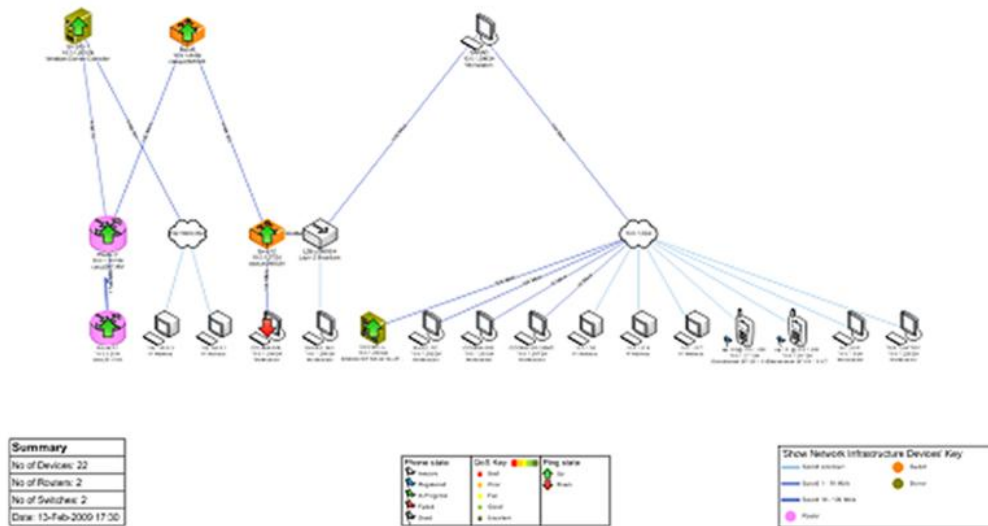
- ▶ Efficient fast fault notification and detection
- ▶ Faster fault isolation leading to less expensive down time
- ▶ Increased cost efficiency with minimal effort

Expand Functionality

- ▶ autoPinger™ can be deployed as a stand alone or with other tools and modules from Codima Toolbox. The pinger tool is included with autoVoIP™, autoVoIP™ Consultancy Kit and autoMonitor™
- ▶ Add Live Views in Microsoft® Office Visio®
- ▶ Add An IT Professional's Network Toolkit

Add Live Views in Visio®

Codima Network Layer 2 Topology



Key Features

- Automatically provides notification when key network devices stop working
- Pinger results can be visualized live in Visio drawings by adding autoMap™ to autoPinger™

Key Benefits

- Simple performance analysis can be done 24/7 to determine reliability service level, response time and service levels over short and extended time periods
- Basic QoS checks can be carried out in seconds by varying priority on ping streams, typically varying priorities to the same device to see the impact of the different packet priorities generated by autoPinger™
- The Alarm sound patterns can be used by network managers to obtain an instant alarm - the Alarm sound patterns are especially useful on small networks as they provide a means of checking the operation of critical network components
- The Echo sound patterns can be used by engineers to monitor a problem device without having to keep watching a pinger console

Key Functions

- Measures Pinger Service Levels in terms of ping fail % and ping response time, providing this information for the last 15 seconds, last 10 minutes and last 10 hours
- Displays Pinger Status results in the Pinger Manager display - this information is also provided historically
- The Pinger target IP addresses can be provided manually or they can be taken automatically from the currently loaded autoMap database when autoMap™ is added to autoPinger™
- Audio Report System - the user can select specific sounds for good and failed ping response, so they can hear when an IP address stops responding. Normally this would be used to check out a single IP address at a time, but the user can potentially allocated up to 8 different sound patterns (4 for echo OK and 4 for echo fail) which means the user could listen to the sound patterns for up to four addresses at a time.
- Global Alarm System - can be set up to apply one or more of the following actions:
 - Log echo failure to Alarm Log
 - Send out an SNMP Trap when echo failure is logged
 - Send a notification email when echo failure is logged
- The Global Alarm System has a flood control system, i.e., facilities to stop autoPinger™ from generating an alarm report for very short-lived events and to stop the same alarm condition being logged too many times.
- Users can also pre-configure their own messages for inclusion in the alarm log, SNMP Trap or Email notification.

Requirements

- Microsoft® Vista, XP Professional and Windows 2003 Server with 2GHz CPU (minimum)
- 1 Gb RAM (minimum)
- Monitor resolution: 1024 x 768 (minimum)
- Microsoft® Office Visio® 2003 or 2007 when used with autoMap™ and autoMonitor™
- 2 Gb RAM (minimum) when used with autoMap™ and autoMonitor™

About Codima Toolbox

Codima Toolbox is a versatile, scalable and integrated solution that helps system integrators, service providers and large organizations as well as small and medium sized companies to manage their networks successfully. Built from the ground up the easy-to-use, cost efficient, and highly visual tools deliver a unique beginning-to-end solution for VoIP pre-assessment through post-deployment in addition to automated network inventory, mapping, pinging and monitoring visualization IT networks directly in Visio®.

Key Features include:

- Traffic Simulation and Stress Testing
- Real Time Monitoring
- Automatic Correlation Engine
- Troubleshooting Grid Overview
- In-depth Reports
- Network Monitoring - One Stop Solution
- Automatic Network Inventory, Mapping and Pinging, visualizing IT assets directly in Visio®

About Codima

Codima's team has a long track record of bringing highly advanced network technology to the market. Today we are recognized for tools that help organizations to reduce costs, save time and successfully manage their infrastructure networks from beginning to end. Codima is a Microsoft® Certified Partner. autoMonitor™ and autoMap™ are key solution providers to Microsoft® Visio® Toolbox. Codima is an Avaya DevConnect Gold Partner and autoVoIP™, autoMap™ and autoAsset™ are tested and accepted as Avaya Compliant. Codima Toolbox resells through our partners globally.



Microsoft Visio Toolbox



www.codimatech.com

North America

Philadelphia
ussales@codimatech.com

Asia

Tokyo
asiasales@codimatech.com

Australia

Sydney
australiasales@codimatech.com

EMEA

London
Copenhagen
Johannesburg
Munich
Paris
Stockholm
emeasales@codimatech.com



Copyright ©2003-2009 Codima Inc.
All Rights Reserved.