



**codima**  
toolbox

**autoMap™**

autoAsset™

autoMap™

autoMonitor™

autoAnalyzer™ Consultancy Kit

autoVoIP™ Blaster

autoVoIP™ Simulator

autoVoIP™

autoVoIP™ Consultancy Kit

▶ call playback

▶ frame flow analyzer

▶ RTP analyzer

▶ multi site scheduler

▶ path analyzer

▶ report browser

▶ remote management

## Automate Network Discoveries with Visio® - Take Your IT Network To The Next Level

autoMap™ is part of Codima Toolbox, the fully automated and fully integrated solution for managing IT networks. A key solution provider to Microsoft® Visio® Toolbox, autoMap™ has the unique ability to automatically discover and bring visibility into any IT network, generating topology drawings directly with Visio®, and more.

Automating network discovery and visualizing IT networks saves time and reduces costs. With its many capabilities autoMap™ is at the forefront in IT asset management helping network managers run their IT networks cost efficiently.

autoMap™ creates topology drawings directly with Visio®, visualizing any IT network. Since Visio® included in Microsoft® Office, is often already installed by end users, integrating autoMap™ is simple. Visualization is also key to successful network support and design.

An agent less solution, autoMap™ utilizes information already available from devices and processes on the network. The discovery run by Codima Discovery Engine™ identifies and reports on managed and unmanaged devices installed.

Easy to use, configure and deploy, the network inventory tool quickly reduces installation, training and administration costs. Budgeting, decision-making and analysis are other areas where autoMap™ is effective. Complex information can be shared and presented to others facilitating business processes as topology drawings and extensive information can viewed on web pages.

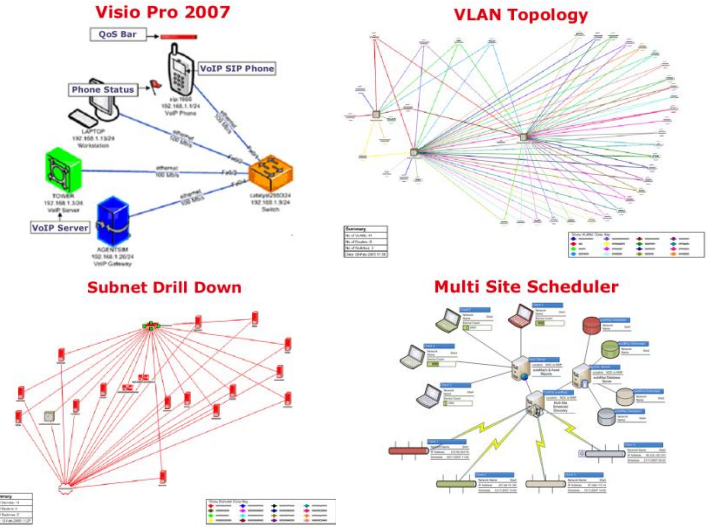
The Historical Change Facility provides an automated inventory that highlights changes that have occurred on the network between discovery runs, a helpful feature to control IT assets.

Identifying unmanaged IT assets enhances security management and autoMap™ also integrates with Microsoft® Office Visio® 2007 Connector for the Microsoft® Baseline Security Analyzer.

Auditors and administrators facing today's increasing legal requirements and need for network compliance can rely on autoMap™ for assistance. Leveraging automated network inventory, autoMap™ provides IT asset information that is easy to access and understand.

With autoMap™ Multi Site Scheduler a network manager can set up scheduling operation from a central point and automate discovery runs across multiple sites. Organizations can stay up to date, identifying assets and producing network topology drawings automatically on a regular basis for multiple networks in different locations.

Flexible and scalable, the multi-vendor network inventory solution is applicable to small, medium and large organizations, as well as service providers and system integrators.



### Network Mapping

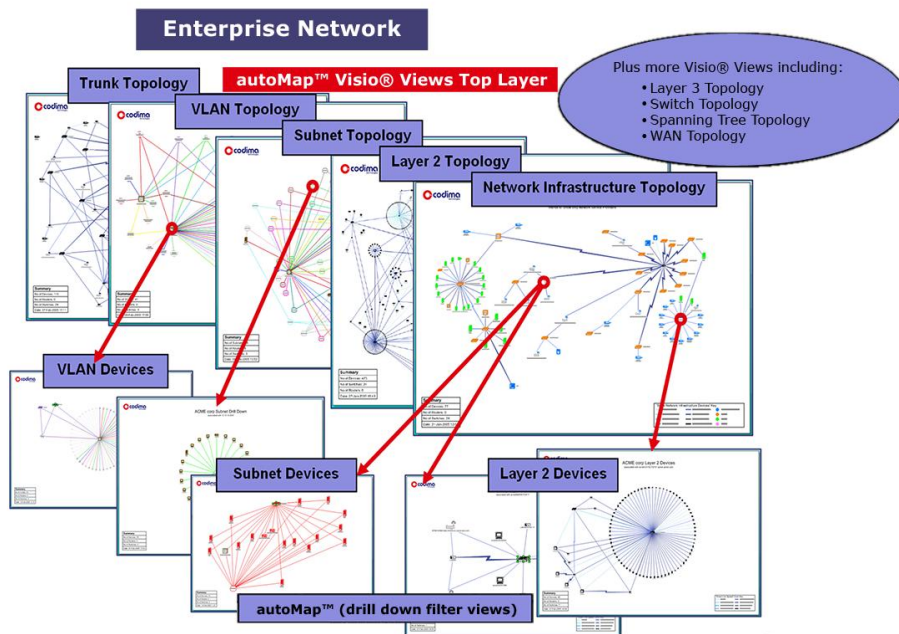
- ▶ Automatically generate topology drawings directly with Microsoft® Office Visio® 2003 or 2007
- ▶ Discover and report on all devices and software installed in any IT network - for both Windows and Linux Platforms
- ▶ Highlight topology and IT asset changes between discovery runs with Historical Change Facility
- ▶ Perform Microsoft® Baseline Security Analysis
- ▶ View topology drawings on a web page and share extensive asset information
- ▶ Automate discovery runs across multiple sites
- ▶ Identify managed and unmanaged devices
- ▶ Track commercial installed software versions and license requirements

### What Your Business Stands To Gain

- ▶ Automation of time consuming processes
- ▶ Increased cost efficiency
- ▶ Compliance and IT service assurance
- ▶ Assistance in IT budgeting, network audits and legal requirements
- ▶ Equipment rationalization
- ▶ Ability to police software installations

### Expand Functionality

- ▶ autoMap™ can be deployed as standalone or integrated with other tools from Codima Toolbox
- ▶ Add VoIP Monitoring And Troubleshooting
- ▶ Add An Engineer's Portable VoIP Toolkit
- ▶ Add An IT Professional's Network Toolkit



## Key Features

- Automatically generate Microsoft® Office Visio® network topology drawings
- Save network topology drawings and asset reports as HTML pages on a Web Server - view and share network topology and asset information
- Improve network planning capacity and operational efficiency by seeing how devices are connected - view link information as well as Spanning Tree, Subnet and VLAN topologies
- Identify managed and unmanaged devices
- Identify and report on both Windows and Linux platforms
- Automatically identify SIP Phones, Servers and Gateways
- Single system deployment to gather information from existing agents on the network
- Perform a Microsoft® Baseline Security Analysis (MBSA) on the Microsoft® infrastructure - one click integration with MBSA
- Automate discovery runs across multiple sites with the Multi Site Scheduler

## Key Benefits

- Reduce maintenance costs and save time with automated processes
- Allow network managers to automatically discover and view the topology of their entire enterprise network
- Use a well known and often installed application, Microsoft® Office Visio®
- Rationalize equipment - for example identify how many routers/switches have free ports
- Rationalize software requirements - for example identify how many commercial software packages and which versions, are installed on devices in the network
- Maximize asset information using new Visio® 2007 Professional Data Link feature to import data from an external source e.g. Excel workbook or SQL database into the drawings created using autoMap™

## Key Functions

- Historical Change facility to highlight topology and asset changes between discovery runs
- Discovery scheduler to automatically run discoveries, e.g., daily, weekly, monthly or at a set time
- Comprehensive network discovery and reporting - supports over 4,500 device types, over 8,000 NIC vendors and 30,000 vendor codes - the list is constantly updated
- Extensive switch and router vendor support - Cisco, Nortel, Extreme Networks and more
- Drill Down Visio drawings enable users to focus on sectors of the network

## Codima Discovery Engine™

- Codima Discovery Engine™ uses several protocols in the discovery process including:
  - o SNMP, SIP, NetBIOS, ICMP and rDNS, as well as proprietary vendor protocols such as WMI, CDP or EDP. Use of common and universal protocols makes the discovery agent-less.
- Supports multiple SNMP read communities across the network
- Provides user control of discovery parameters:
  - o Allowed and Prohibited IP Address range can be configured
  - o Bandwidth limits can be set from 64Kbs to 640Kbs
  - o Discovery can be limited to a range of IP addresses or set to discover as many IP addresses as possible
- Provides for discovery across firewalls

## Requirements

- Microsoft® Office Visio® 2003 or 2007
- Microsoft® Windows Vista, XP or Server 2003 with 2GHz CPU (minimum)
- 1Gb RAM (minimum)
- Monitor resolution of 1024 x 768 (minimum)

## About Codima Toolbox

Codima Toolbox is a versatile, scalable and integrated solution that helps system integrators, service providers and large organizations as well as small and medium sized companies to manage their networks successful. Built from the ground up the easy-to-use, cost efficient, and highly visual tools deliver a unique beginning-to-end solution for VoIP pre-assessment through post-deployment in addition to automated network inventory, mapping, and monitoring, visualizing IT networks directly in Visio®.

### Key Features include:

- Traffic Simulation and Stress Testing
- Real Time Monitoring
- Automatic Correlation Engine
- Troubleshooting Grid Overview
- In-depth Reports
- Network Monitoring - One Stop Solution
- Automatic Network Inventory, Mapping, and Monitoring, visualizing IT assets directly in Visio®

## About Codima

The Codima team has a long track record of bringing highly advanced network technology to the market. Today we are recognized for tools that help organizations to reduce costs, save time and successfully manage their infrastructure networks from beginning to end. Codima is a Microsoft® Certified Partner. autoMonitor™ and autoMap™ are key solution providers to Microsoft® Visio® Toolbox. Codima is an Avaya DevConnect Gold Partner and autoVoIP™, autoMap™ and autoAsset™ are tested and accepted as Avaya Compliant. Codima Toolbox resells through our partners globally.



Microsoft Visio Toolbox



[www.codimatech.com](http://www.codimatech.com)

**North America**  
Philadelphia  
ussales@codimatech.com

**Asia**  
Tokyo  
asiasales@codimatech.com

**Australia**  
Sydney  
australiasales@codimatech.com

**EMEA**  
London  
Copenhagen  
Johannesburg  
Munich  
Paris  
Stockholm  
emeasales@codimatech.com



Copyright ©2003-2009 Codima Inc.  
All Rights Reserved.